



# Yamazaki Mazak Vertical Machining Centre

VCN Smooth series made in Japan

▼ Dedicated



# NC ROTARY TABLE



# WISE








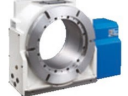




**NC ROTARY TABLE**

# NC Rotary Table Machine Compatibility

NC ROTARY TABLE

**Mazak**

Machine Model		Mazak			
		VCN-430A/430A HS	VCN-530C/530C HS	VCN-535C	VCN-700D
Rotary Table	Machine Model				
	Rotary Table				
 MK	200	○P3	○P5	○P7	○
	250	△(○) <sub>Note 2)</sub>	○P5	○P7	○P9
 CK	160	○P3	○	○	○
 RK	200	△(○) <sub>Note 2)</sub>	○	○	○
 TMX	160	○P4	○	○	○
	200	△(○) <sub>Note 2)</sub>	○	○	○
	250	△	○P6	○	○
 TRX	320	△	△	○P8	○
 TP	430	△	△	○	○P9
	530	—	—	△	△P10
 RKT	180	△	△	○	○
 TT	200	△	△P6	○P8	○
	251	△	△	○	○
	321	—	△	△	○P10

Note 1) "△" indicates that it can be installed conditionally.

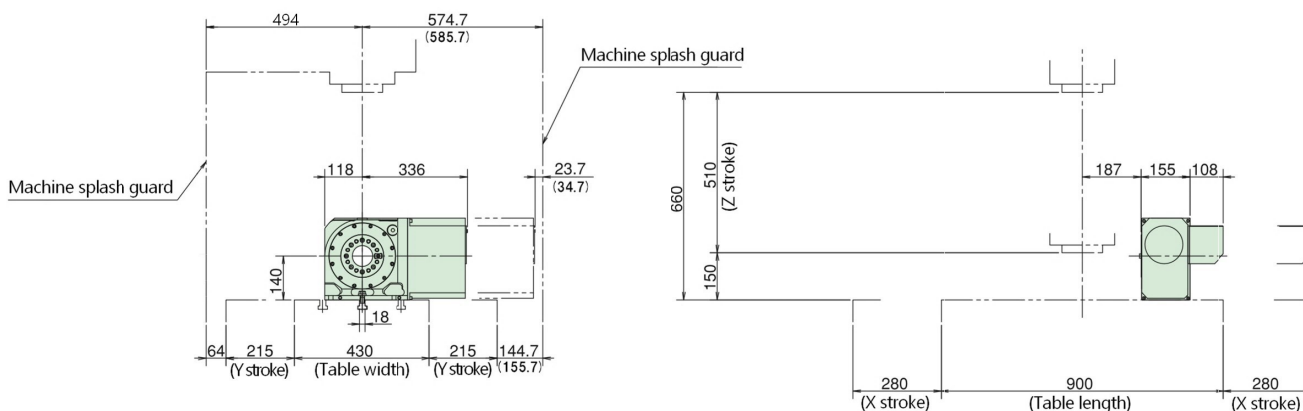
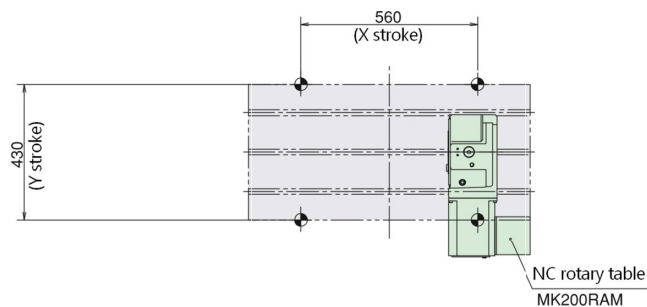
Note 2) (○) is HS type compatibility.

Note 3) The confirmation of interference with machining centres is based on the latest data held by Kitagawa at the time of catalogue creation, but for more accuracy, please confirm them with the actual machine data.



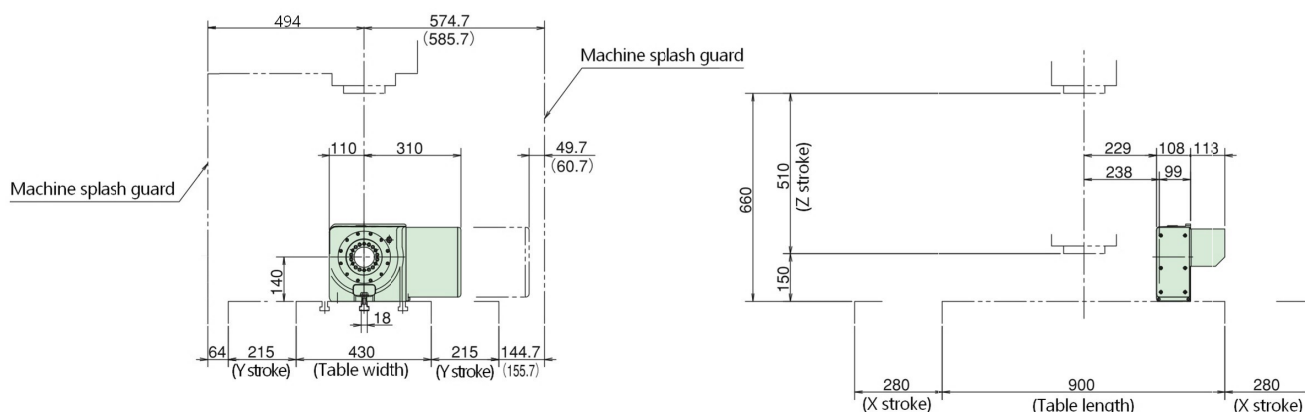
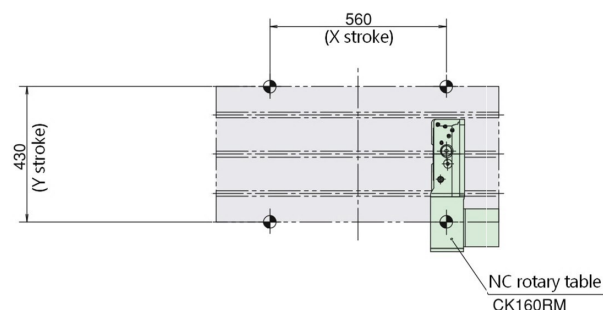
# Yamazaki Mazak Machining Centre VCN-430A/430A HS

## MK200RAM



**Caution** Check the interference between the splash guard and the cable.  
Check the interference of the tool when ATC is operating.  
The parenthesized dimensions indicate the dimensions for VCN-430A HS.

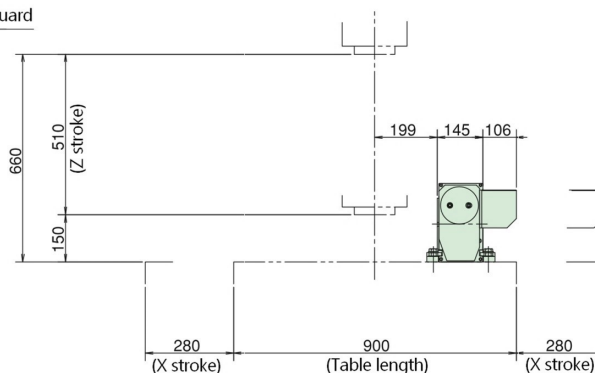
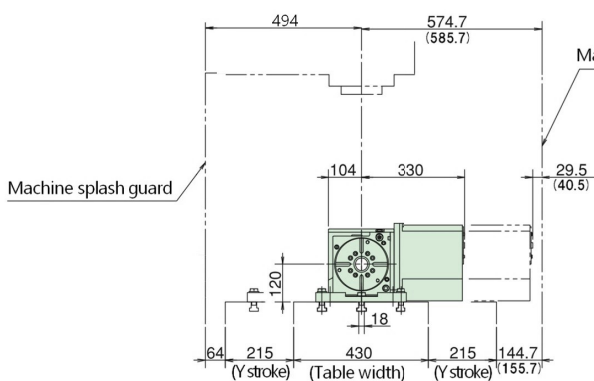
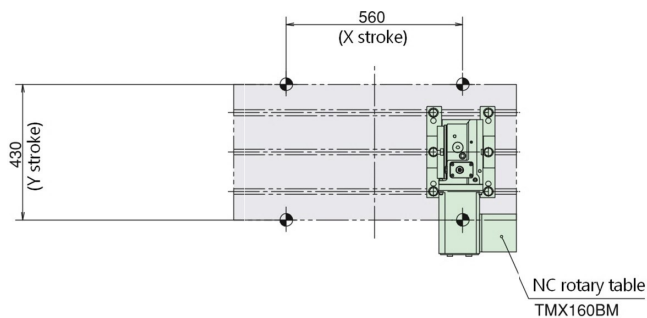
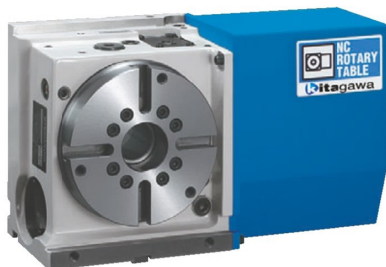
## CK160RM



**Caution** Check the interference between the splash guard and the cable.  
Check the interference of the tool when ATC is operating.  
The parenthesized dimensions indicate the dimensions for VCN-430A HS.



# TMX 160BM

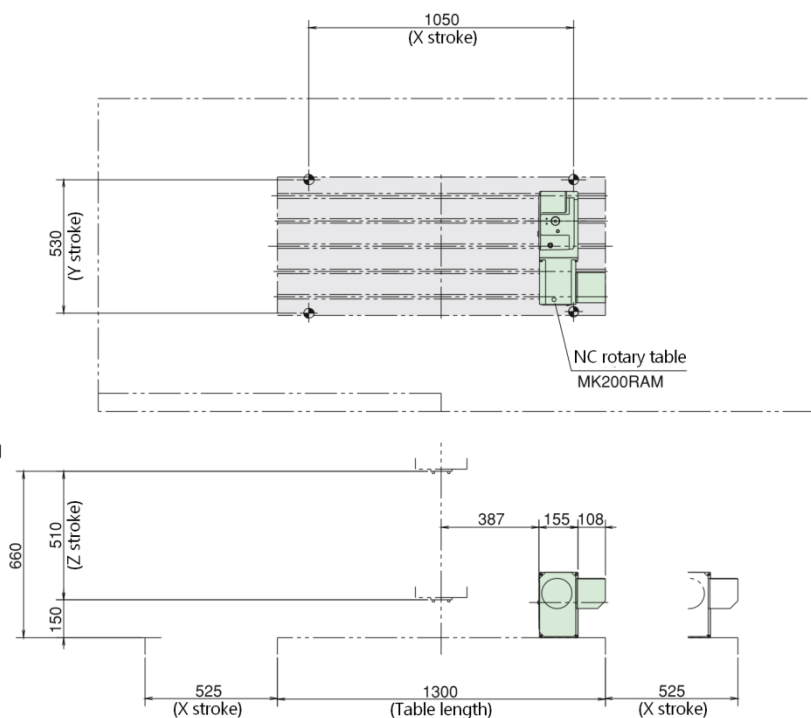
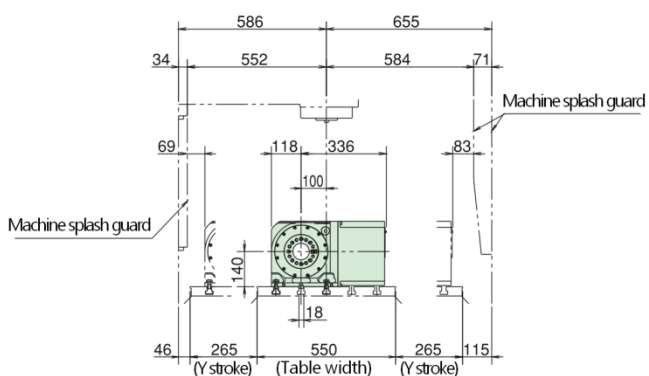
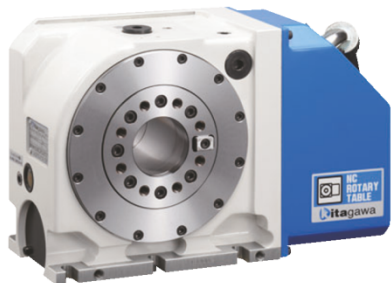


**Caution** Check the interference between the splash guard and the cable.  
 Check the interference of the tool when ATC is operating.  
 The parenthesized dimensions indicate the dimensions for VCN-430A HS.



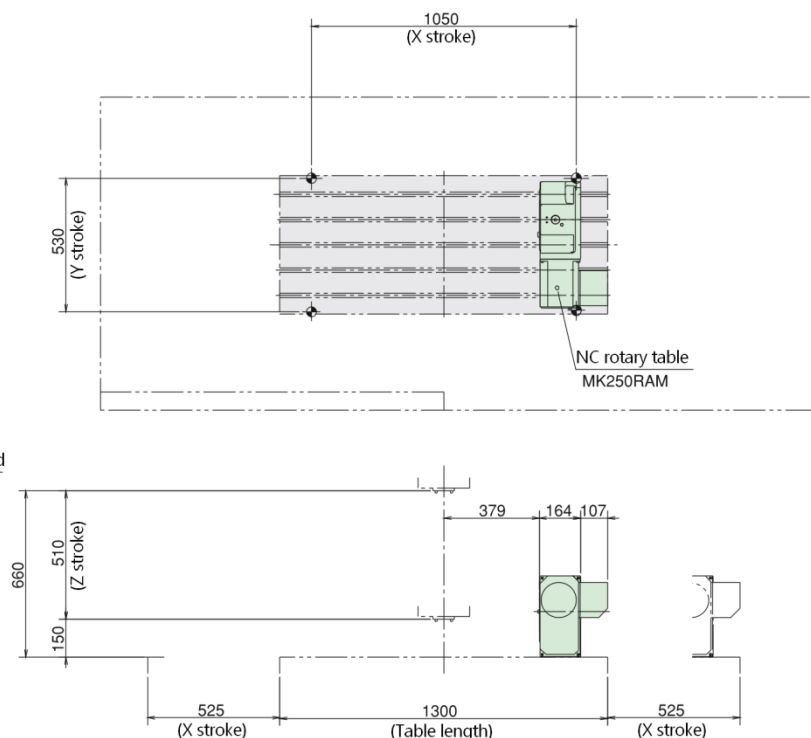
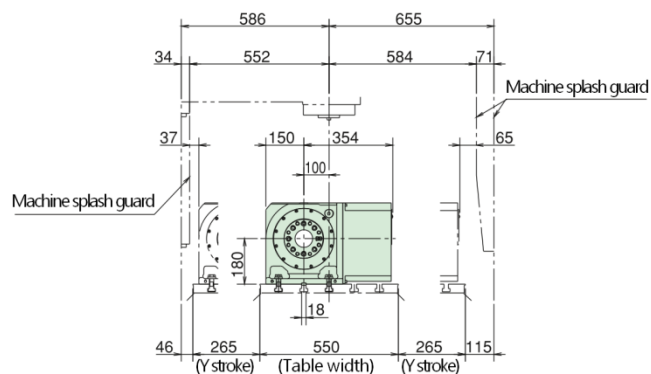
# Yamazaki Mazak Machining Centre VCN-530C/530C HS

## MK200RAM



**Caution** Check the interference between the splash guard and the cable.  
Check the interference of the tool when ATC is operating.  
Note that the reference groove is not in the center of the machine table.

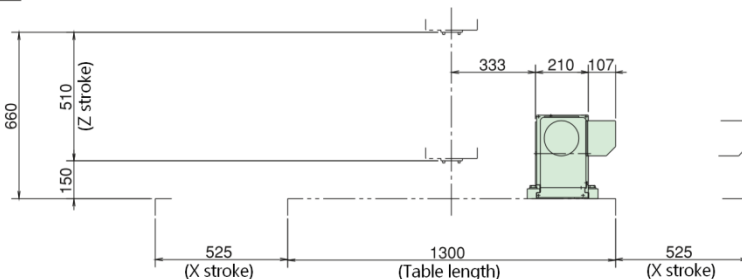
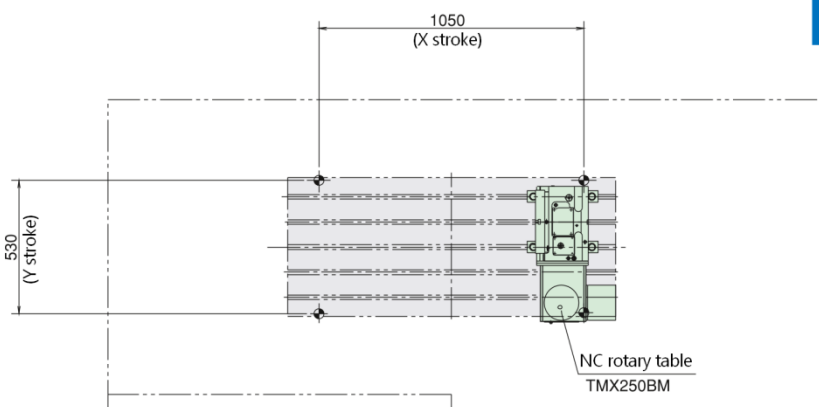
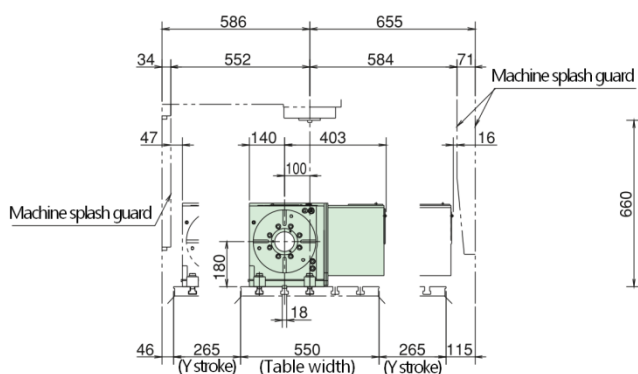
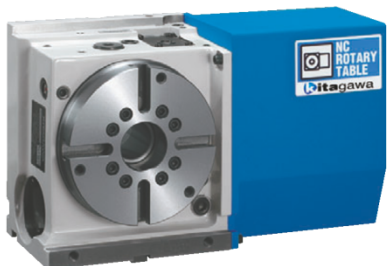
## MK250RAM



**Caution** Check the interference between the splash guard and the cable.  
Check the interference of the tool when ATC is operating.  
Note that the reference groove is not in the center of the machine table.

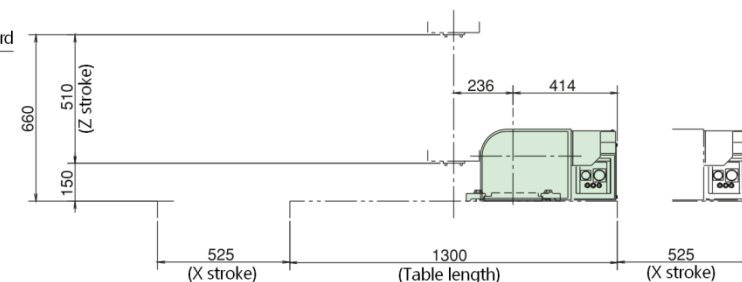
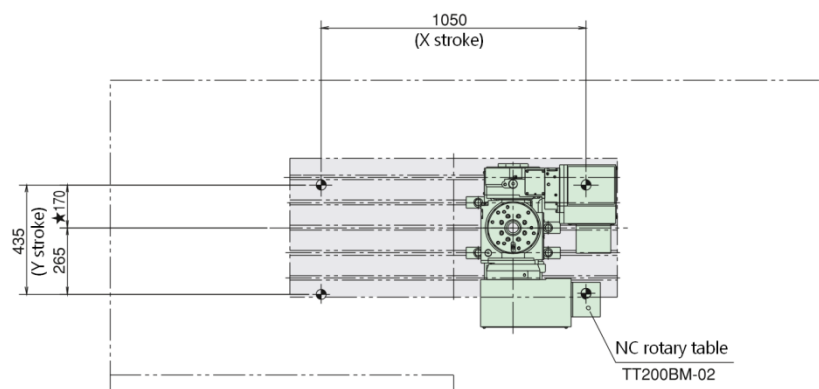
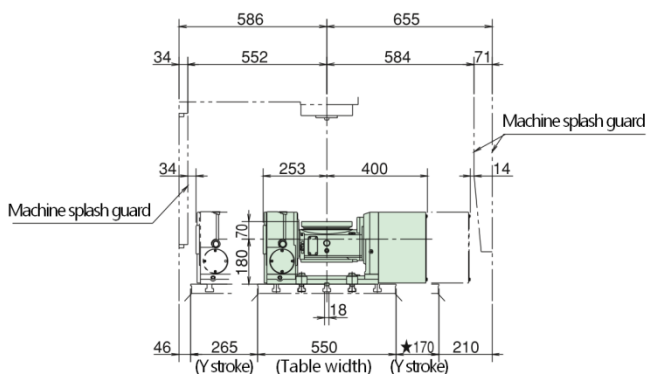


## TMX250BM



**Caution** Check the interference between the splash guard and the cable.  
Check the interference of the tool when ATC is operating.

## TT200BM-02

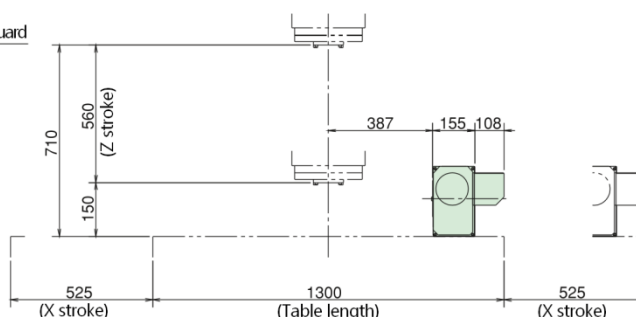
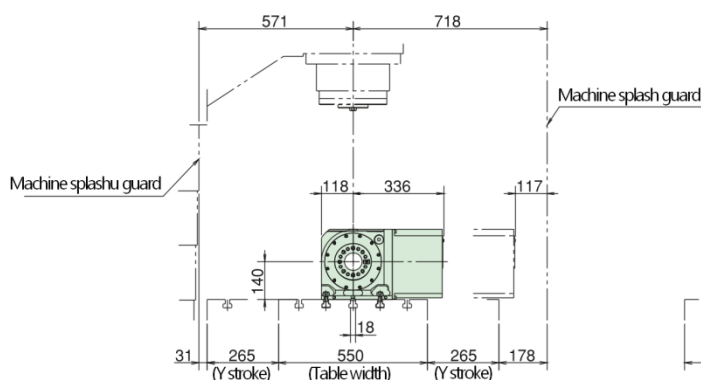
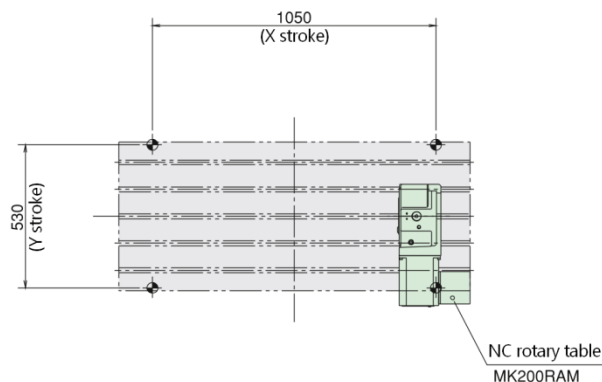
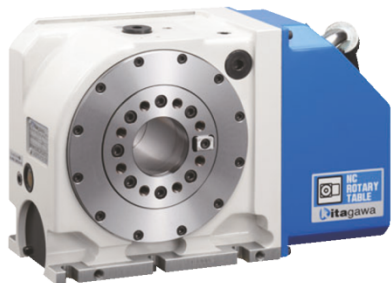


**Caution** The ★ mark on the Y stroke is limited by 95 mm.  
Check the interference between the splash guard and the cable.  
Check the interference of the tool when ATC is operating.



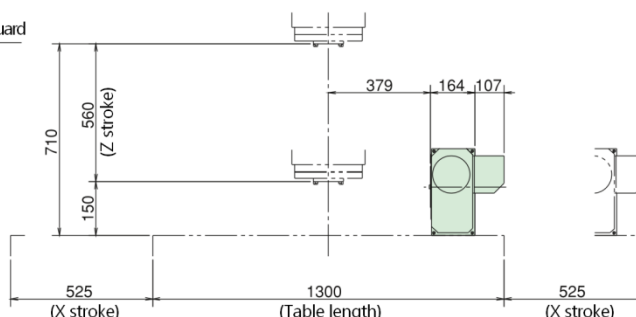
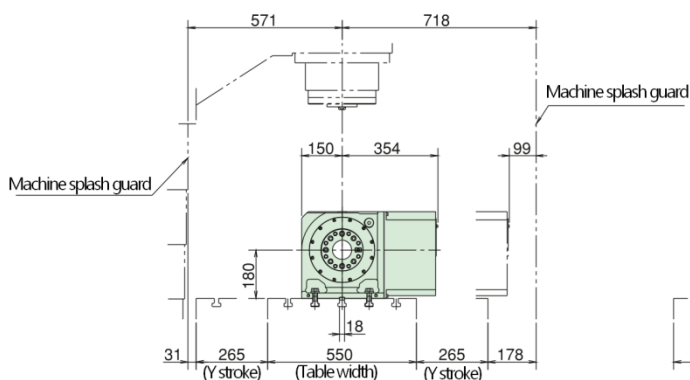
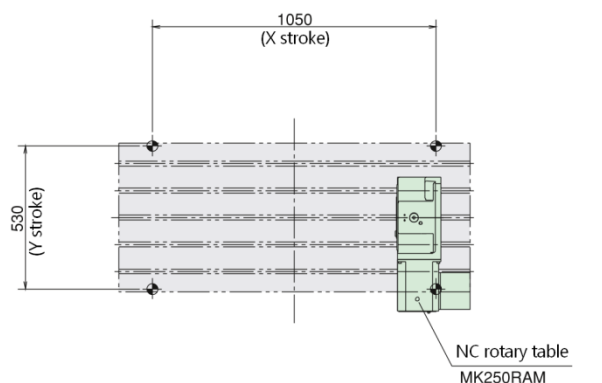
# Yamazaki Mazak Machining Centre VCN-535C

## MK200RAM



**Caution** Check the interference between the splash guard and the cable.  
Check the interference of the tool when ATC is operating.

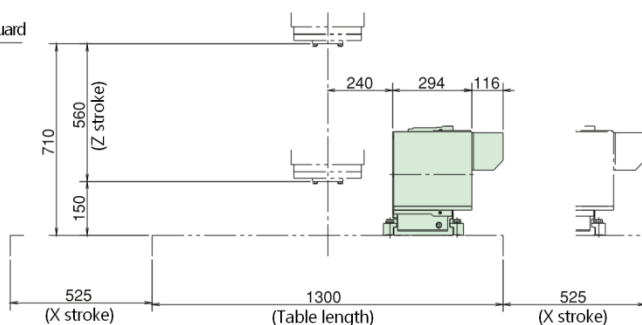
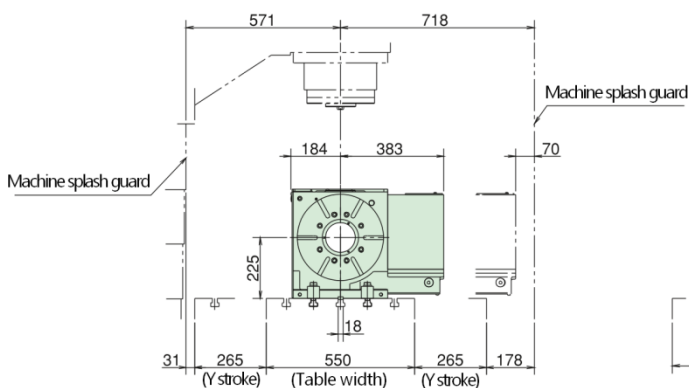
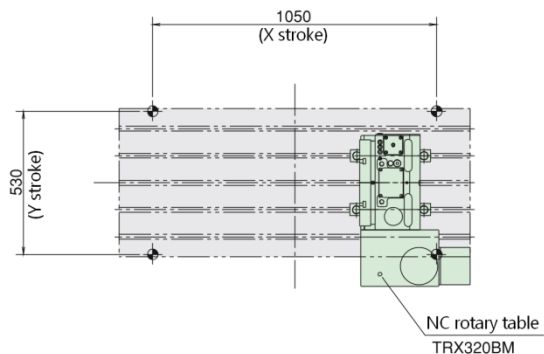
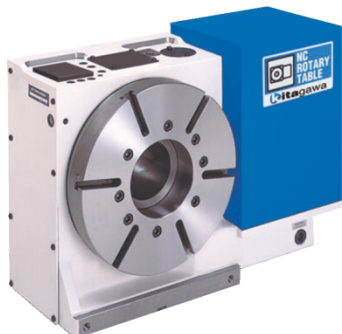
## MK250RAM



**Caution** Check the interference between the splash guard and the cable.  
Check the interference of the tool when ATC is operating.

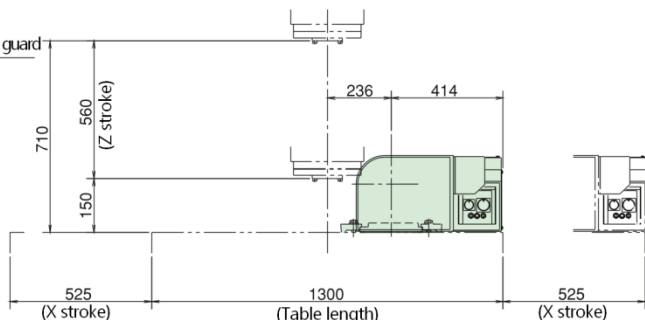
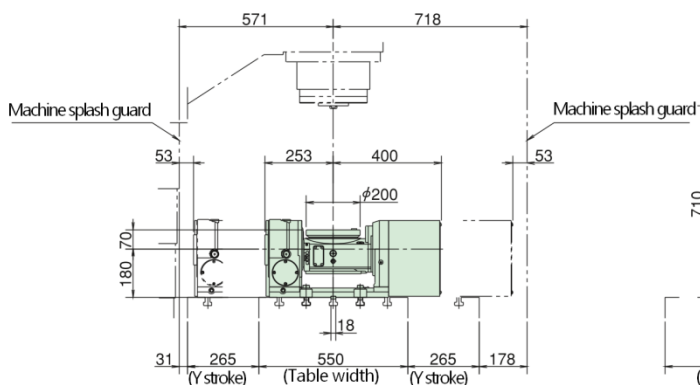
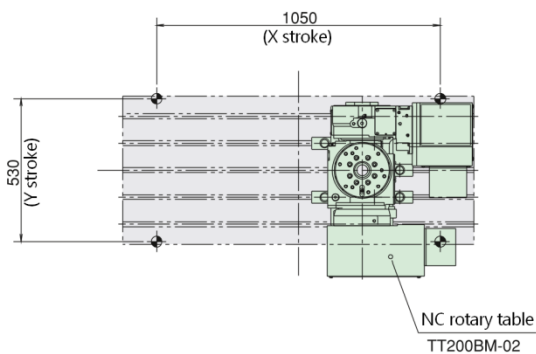


## TRX320BM



**Caution** Check the interference between the splash guard and the cable.  
Check the interference of the tool when ATC is operating.

## TT200BM-02



**Caution** Check the interference between the splash guard and the cable.  
Check the interference of the tool when ATC is operating.

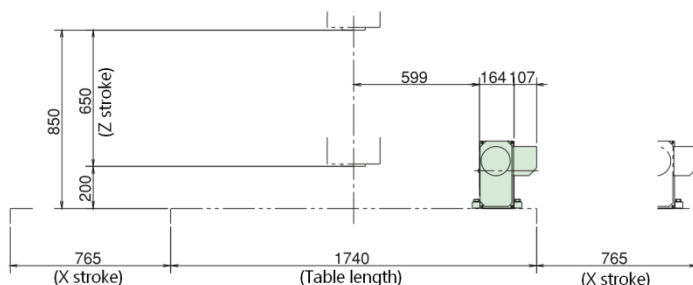
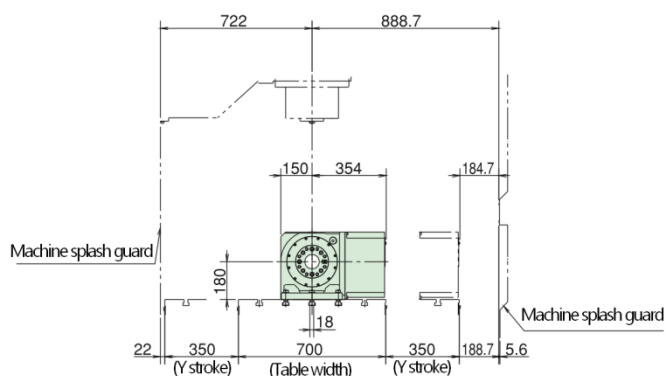
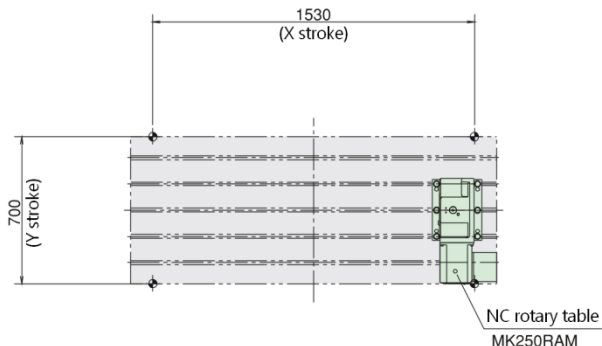




# Yamazaki Mazak Machining Centre

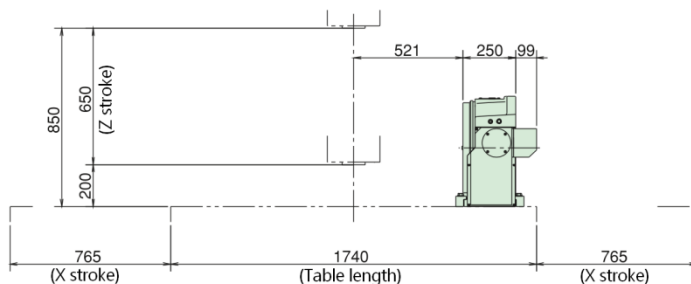
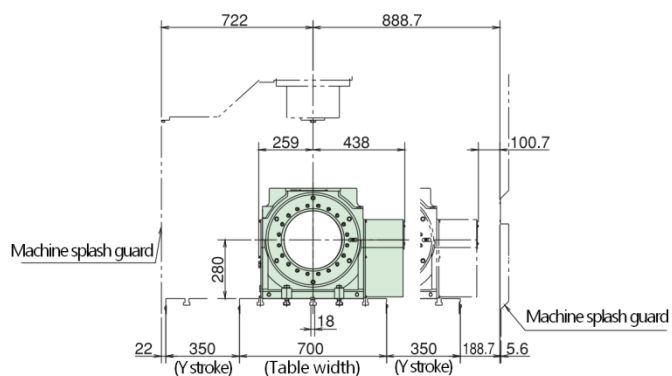
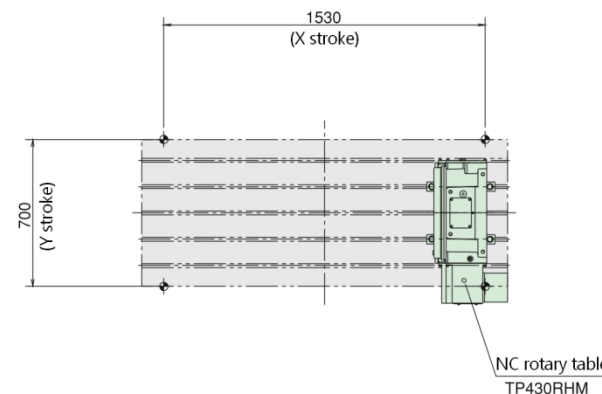
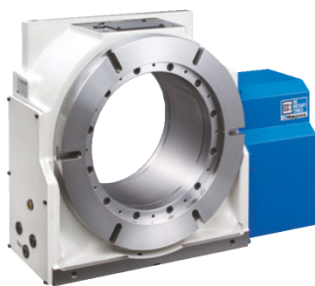
## VCN-700D

### MK250RAM



**Caution** Check the interference between the splash guard and the cable.  
Check the interference of the tool when ATC is operating.

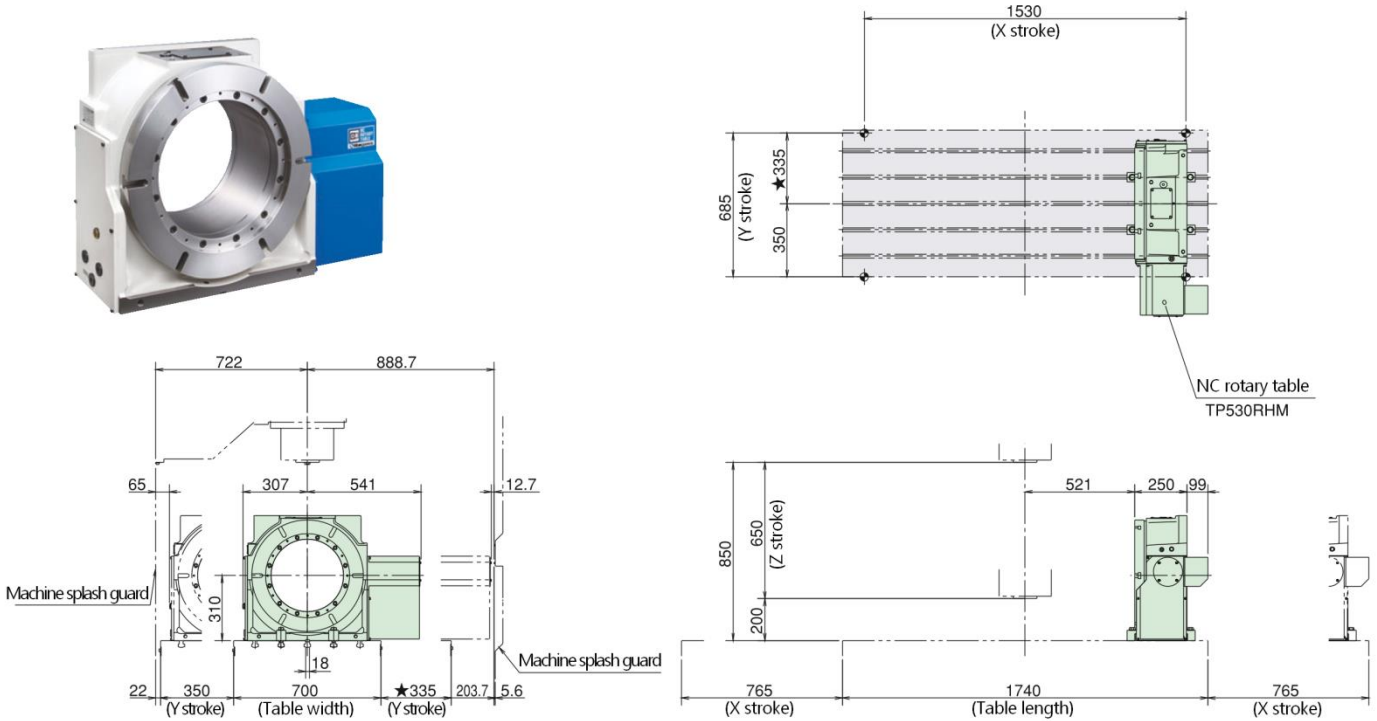
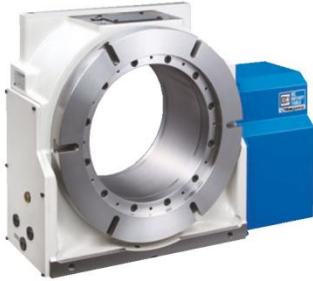
### TP430RHM



**Caution** Check the interference between the splash guard and the cable.  
Check the interference of the tool when ATC is operating.



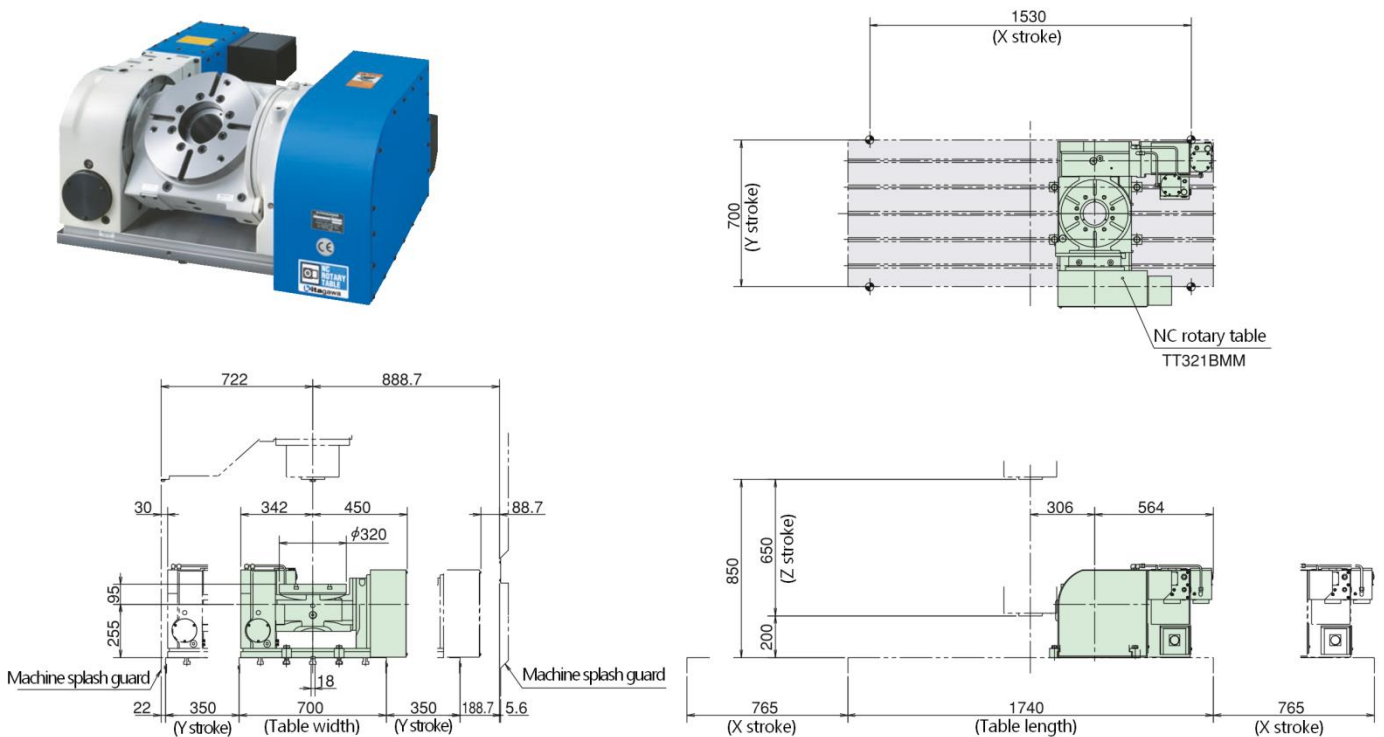
## TP530RHM



**Caution**

The ★ mark on the Y stroke is limited by 15 mm.  
Check the interference between the splash guard and the cable.  
Check the interference of the tool when ATC is operating.

## TT321BMM



**Caution**

Check the interference between the splash guard and the cable.  
Check the interference of the tool when ATC is operating.